

## D15HD Right Angle Adapter - QCI-D15HD-R1, QCI-D15HD-R2



**QCI-D15HD-R1**



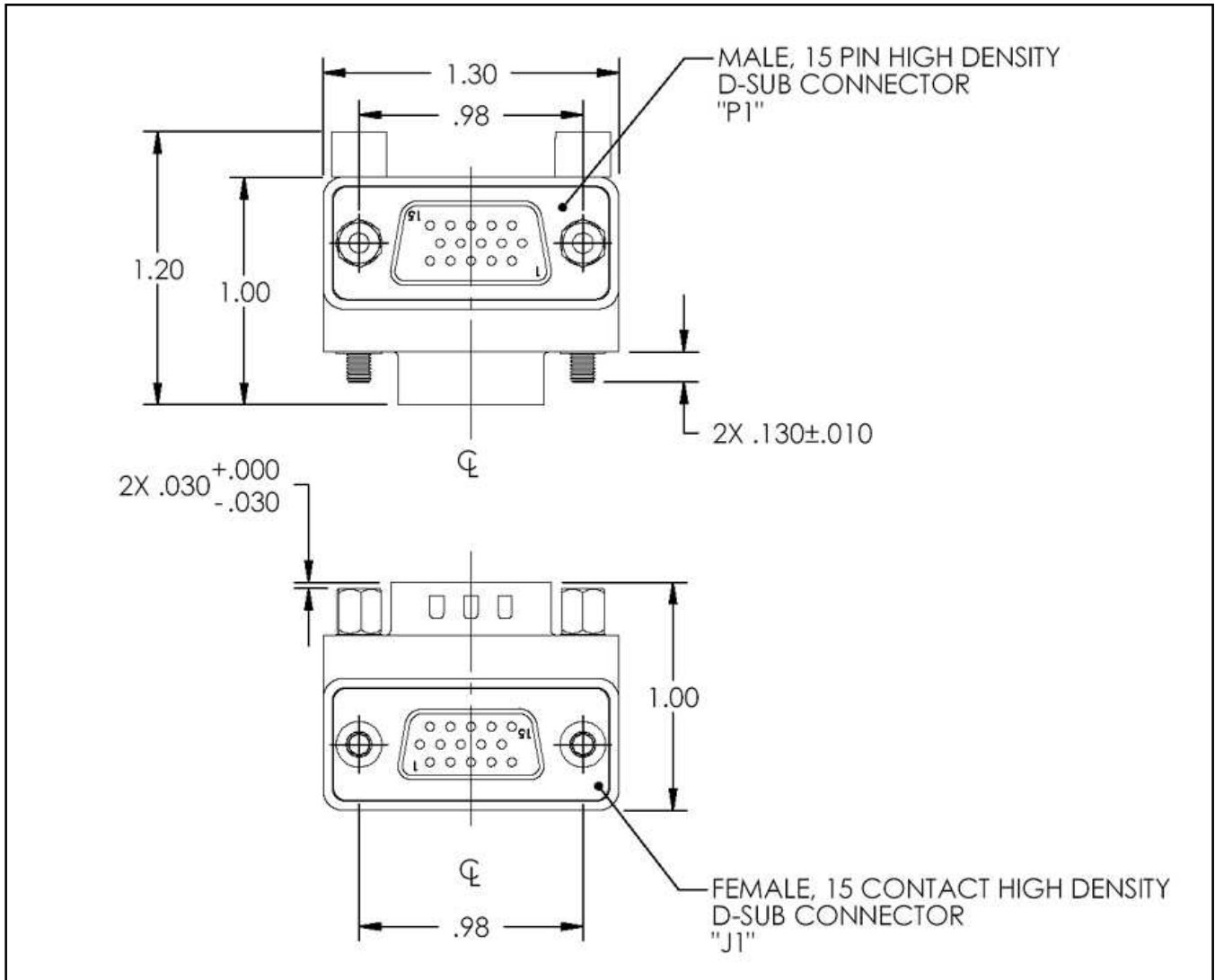
**QCI-D15HD-R2**

## Product Overview

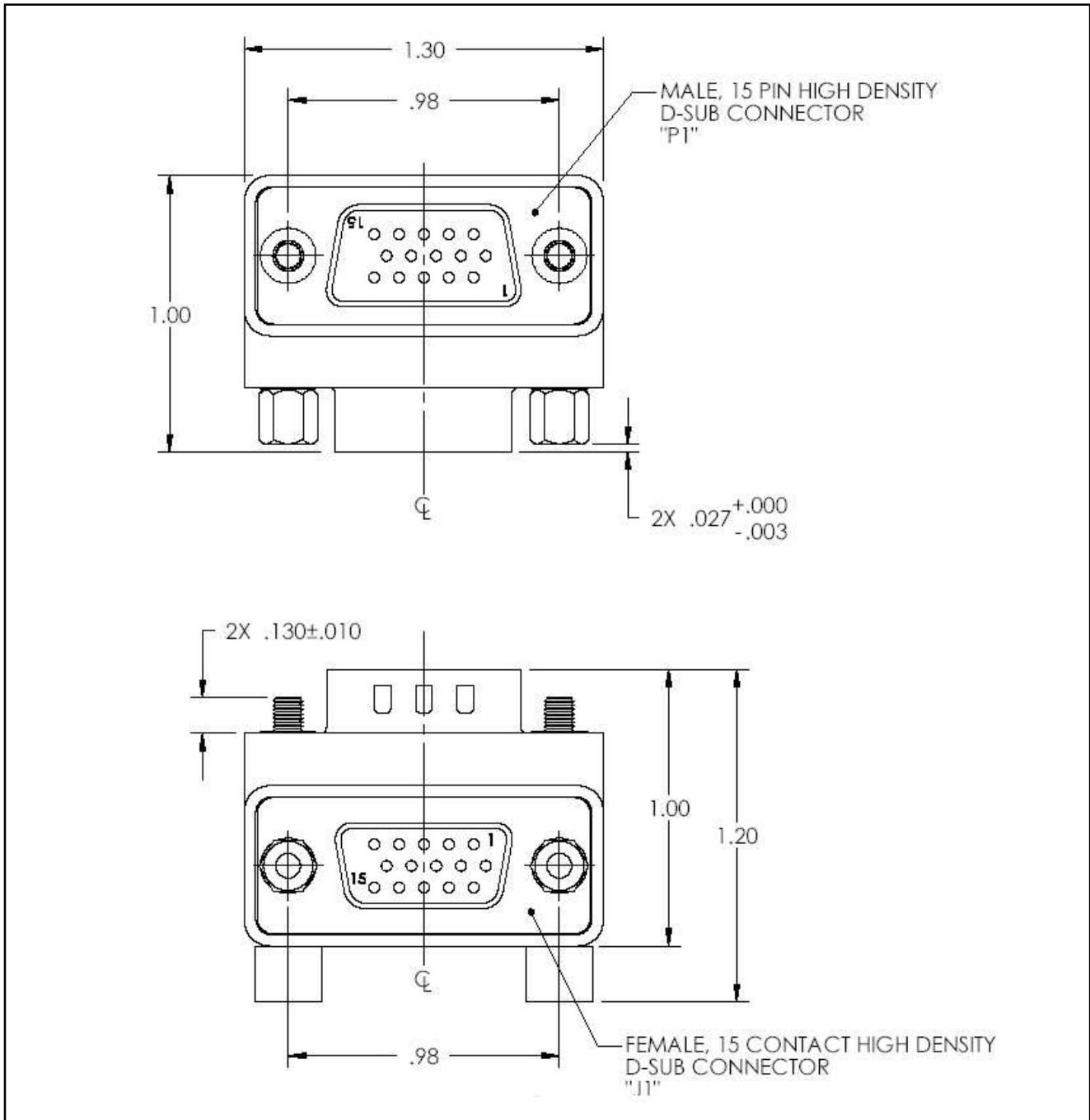
Motor cable connections in tight spaces can be a problem in many applications. These low profile right angle adapters provide an easy and inexpensive way for the motor cables to exit the front or the back of the motor. The height profile is 1 inch after mounting.

# Mechanical Specifications

## QCI-D15HD-R1



QCI-D15HD-R2



P1	J1
1	1
•	•
•	•
•	•
15	15

Pin – Pin from P1 to J1  
 Current: 5Amps per pin